

# Chelated Magnesium formulated in water soluble powder

For the correction of magnesium deficiency in all crops

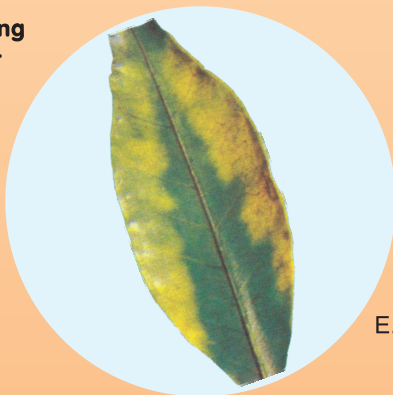
# Elem-Mg

**Chelating  
agent  
EDTA**

Contains  
6.0%  
Magnesium

## Net Weight

- 1 Kg ☐  
5 Kg ☐  
25 Kg ☐



E.C. Fertilizer

**Elem-Mg** is used for the correction of magnesium deficiency in almost all crops and especially in those that magnesium deficiency appears during growth due to magnesium's insufficiency in the soil. **Elem-Mg** contains 6.0% chelated Magnesium (chelating agent EDTA) and is recommended mainly for foliar applications.

### **APPLICATIONS**

Predilution of the product is not required. Just add the recommended quantity of powder in an appropriate amount of water as to ensure full coverage of the surface you want to spray. Agitate for a while as to ensure a complete dilution and adjust the nozzles of the sprayer in order to spray the finest droplets as possible. Then spray the entire area of the leaf and the shoot thoroughly. Foliar applications must be avoided in conditions of strong wind, impending rain and intense sunlight. It is recommended to apply the product in the afternoon when the atmospheric humidity is optimum. In case of rainfall within 4 hours from the spraying, you must spray again 3-4 days later. When used without mixing with other pesticides it is recommended to add a sticking agent in the solution.

PRODUCED BY

**HUMOFERT**



1 Ermou & Theotokopoulou, Metamorphosis, Greece  
Tel. +30 210 284 5891 Fax. +30 210 281 7971  
E-mail: info@humofert.gr Web Site: www.humofert.gr

### **APPLICATION TIMING**

As to achieve better results, foliar applications should start at the beginning of the season when there is sufficient foliage to absorb the spray. It is better to apply many repeated sprays at a low application rate rather than one spray with higher application rate. Avoid foliar applications during blooming. In cases of severe magnesium deficiency, applications must be repeated every 7-10 days.

### **APPLICATION RATES**

#### **Generally for all crops**

Apply foliarly 1 - 2 kg/ha.

#### Notes

1. The solution must not exceed 1 g/l when applied foliarly in fruit tree crops.
2. Application rates always depend on the degree of the magnesium deficiency, the type and the size of the crop and the environmental conditions.

### **COMPATIBILITY**

It can be mixed with almost all insecticides, fungicides and pesticides except mineral compounds of calcium, e.g. Calcium nitrate. Furthermore it is compatible with the rest micronutrients **Elem** and also with solutions containing phosphorus such as liquid foliar fertilizers. It is always recommended to conduct a compatibility test before mixing in the tank.

### **PRECAUTIONS**

Keep it well sealed and store in its original container. Wash thoroughly your hands after handling. Keep out of reach of children and pets. Store in a dry place and away from strong light. Do not apply in crops suffering stress, such as extreme temperatures, strong winds etc. Avoid swallowing and contact with eyes and skin.